



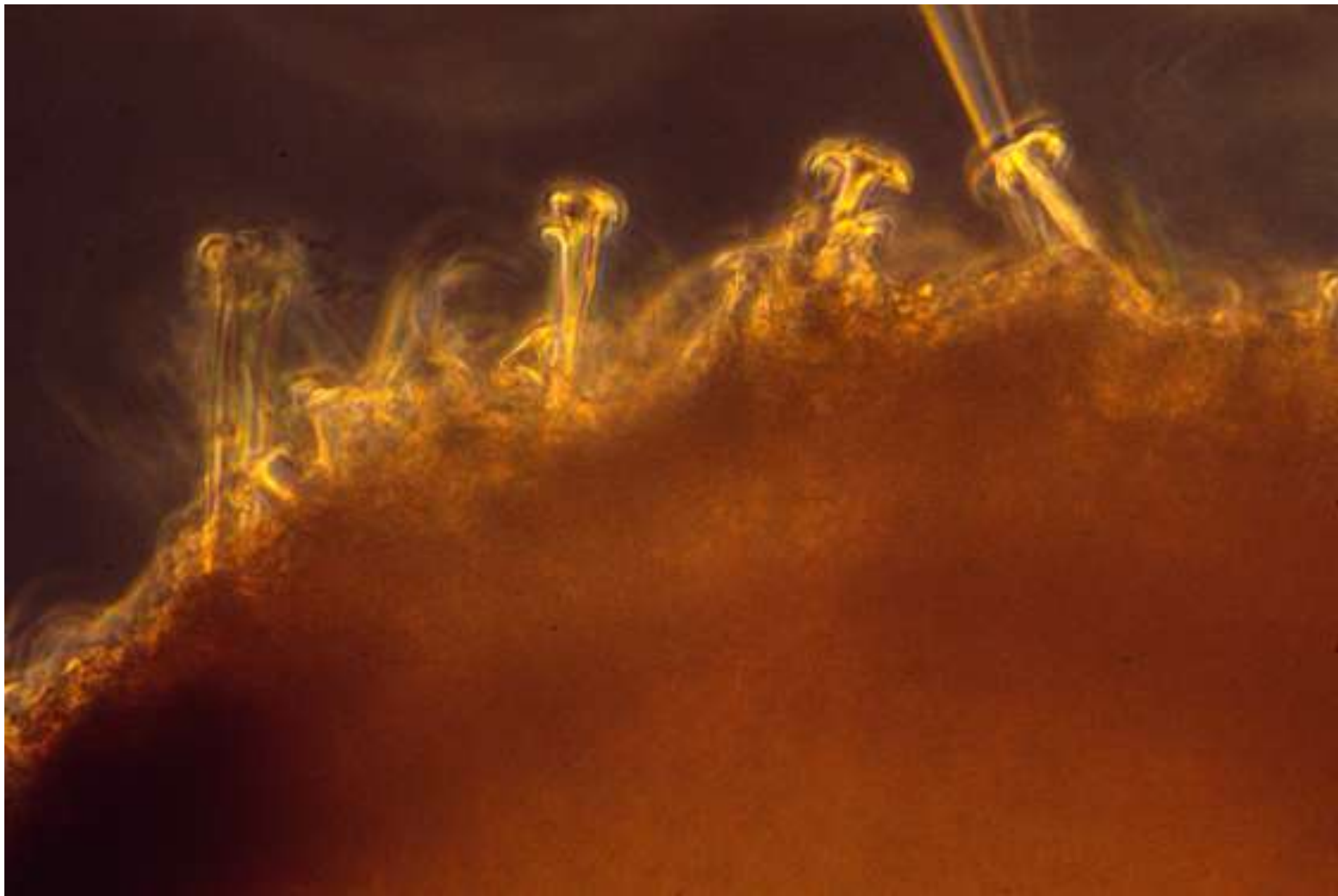


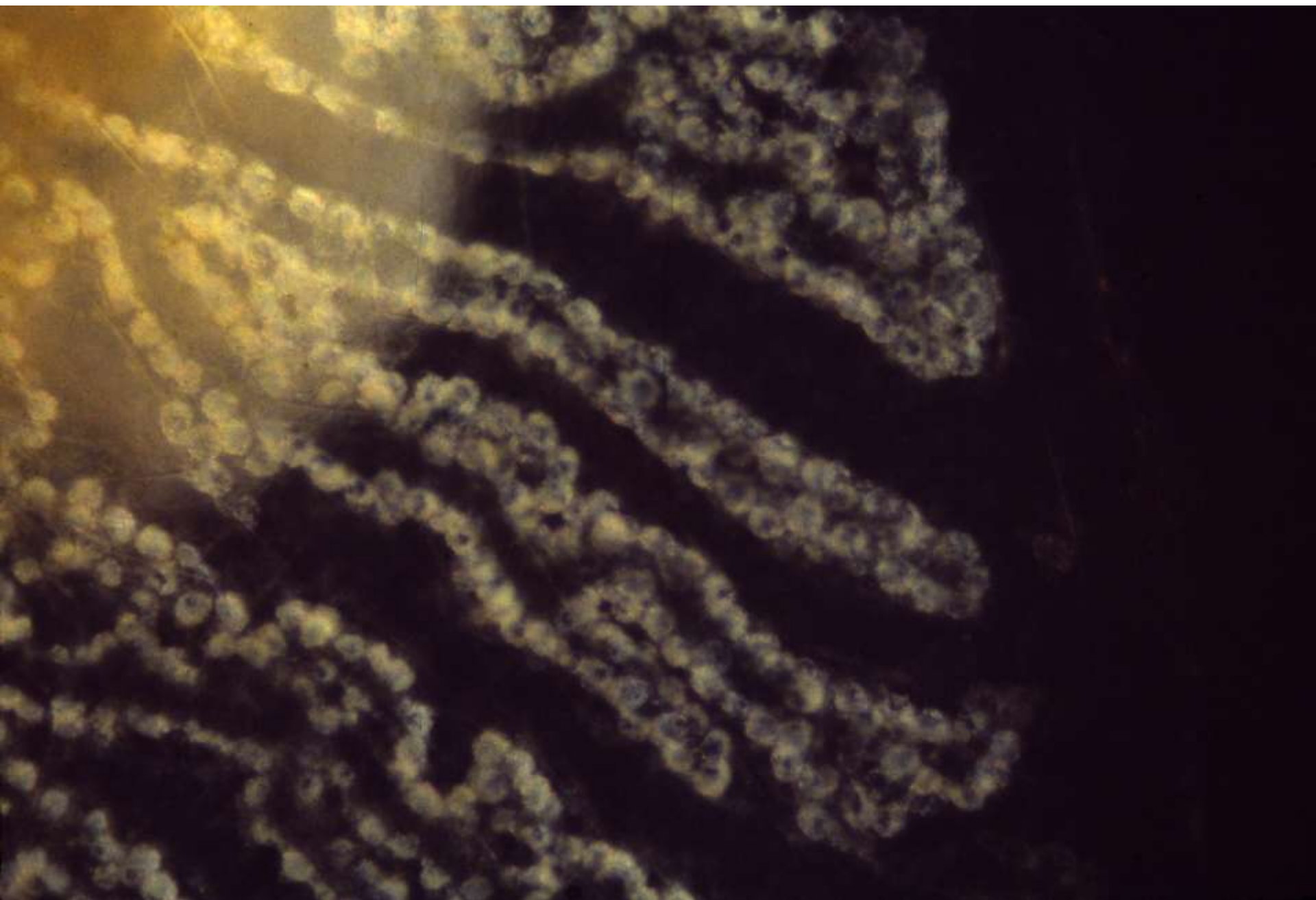
SPONGES

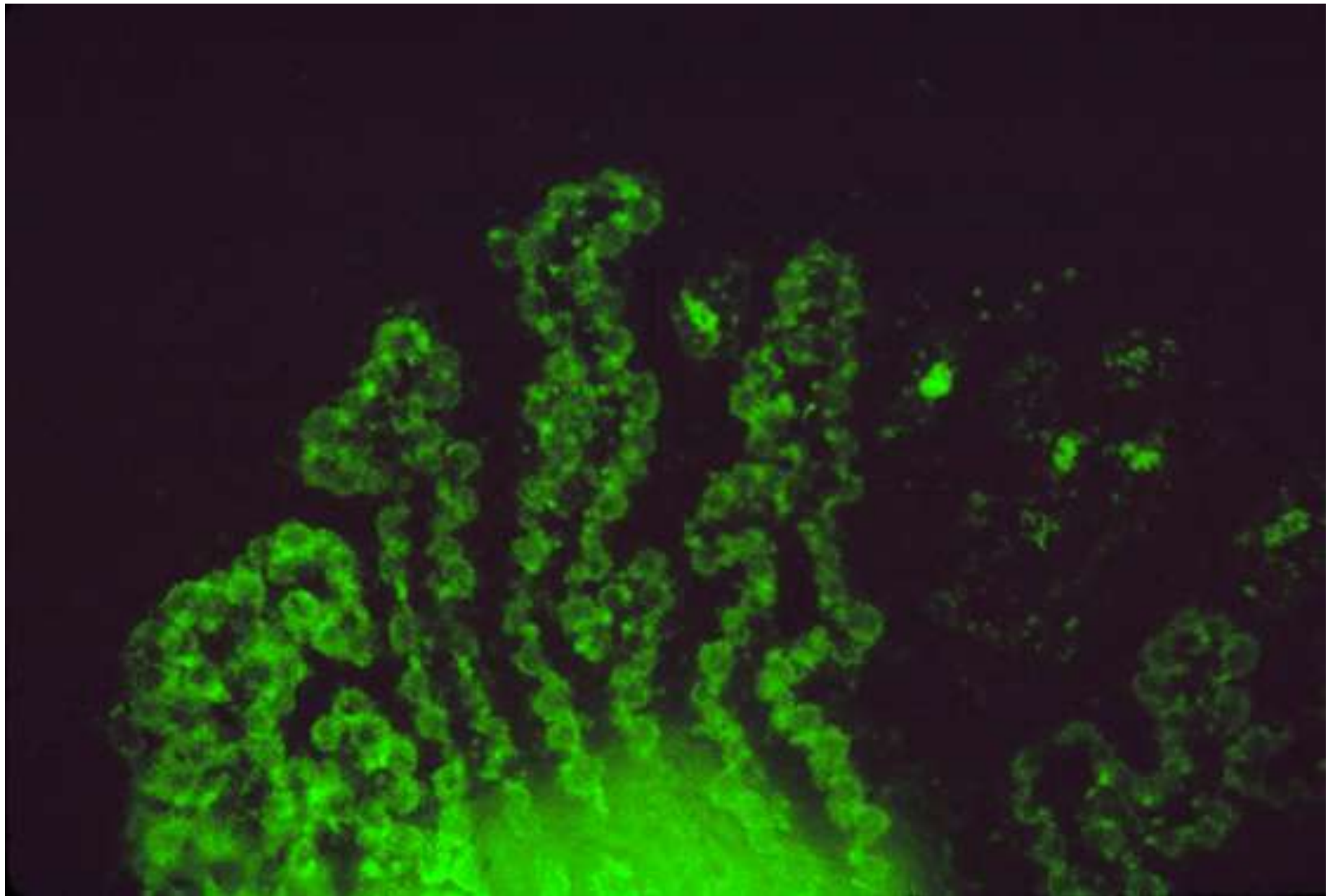
FOR AL HAIRY

4-11-17



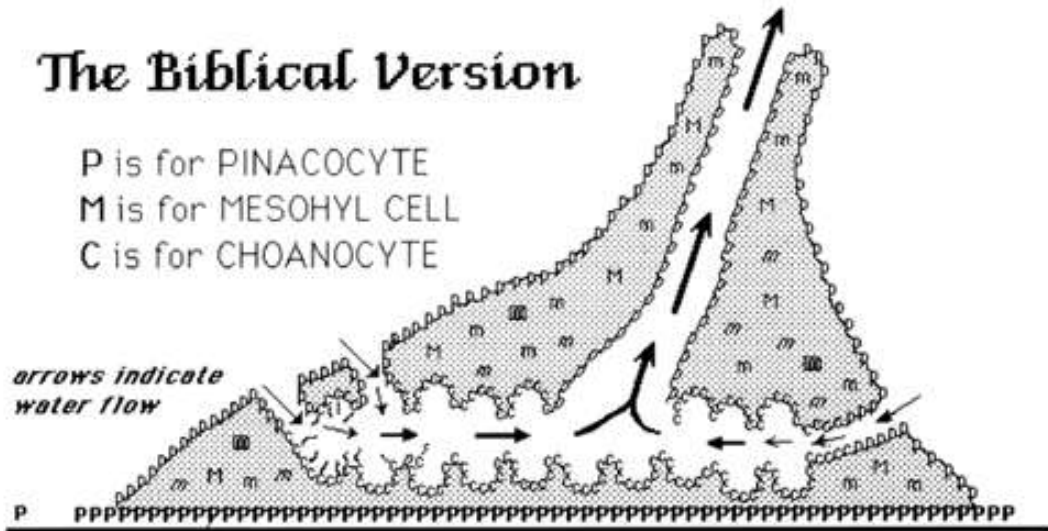






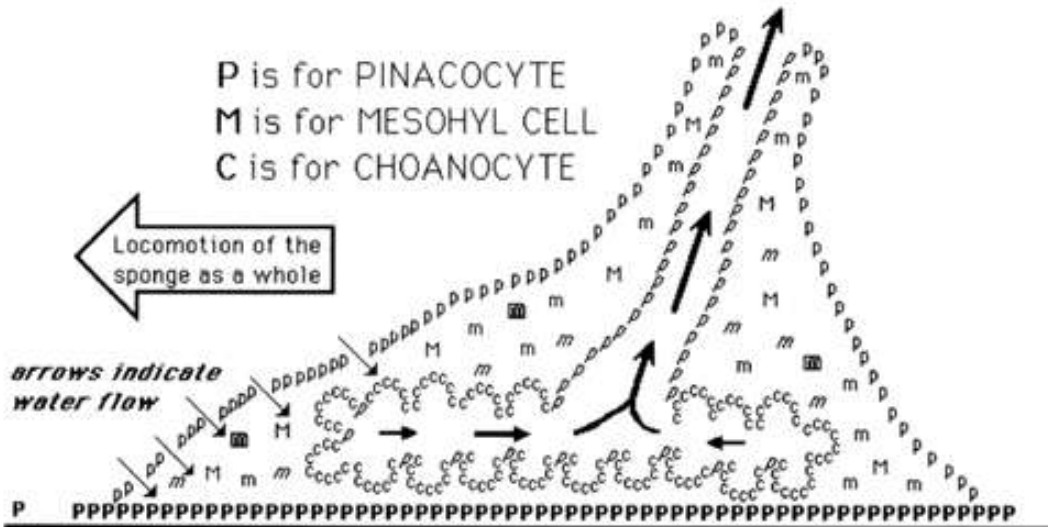
The Biblical Version

P is for PINACOCYTE
 M is for MESOHYL CELL
 C is for CHOANOCYTE

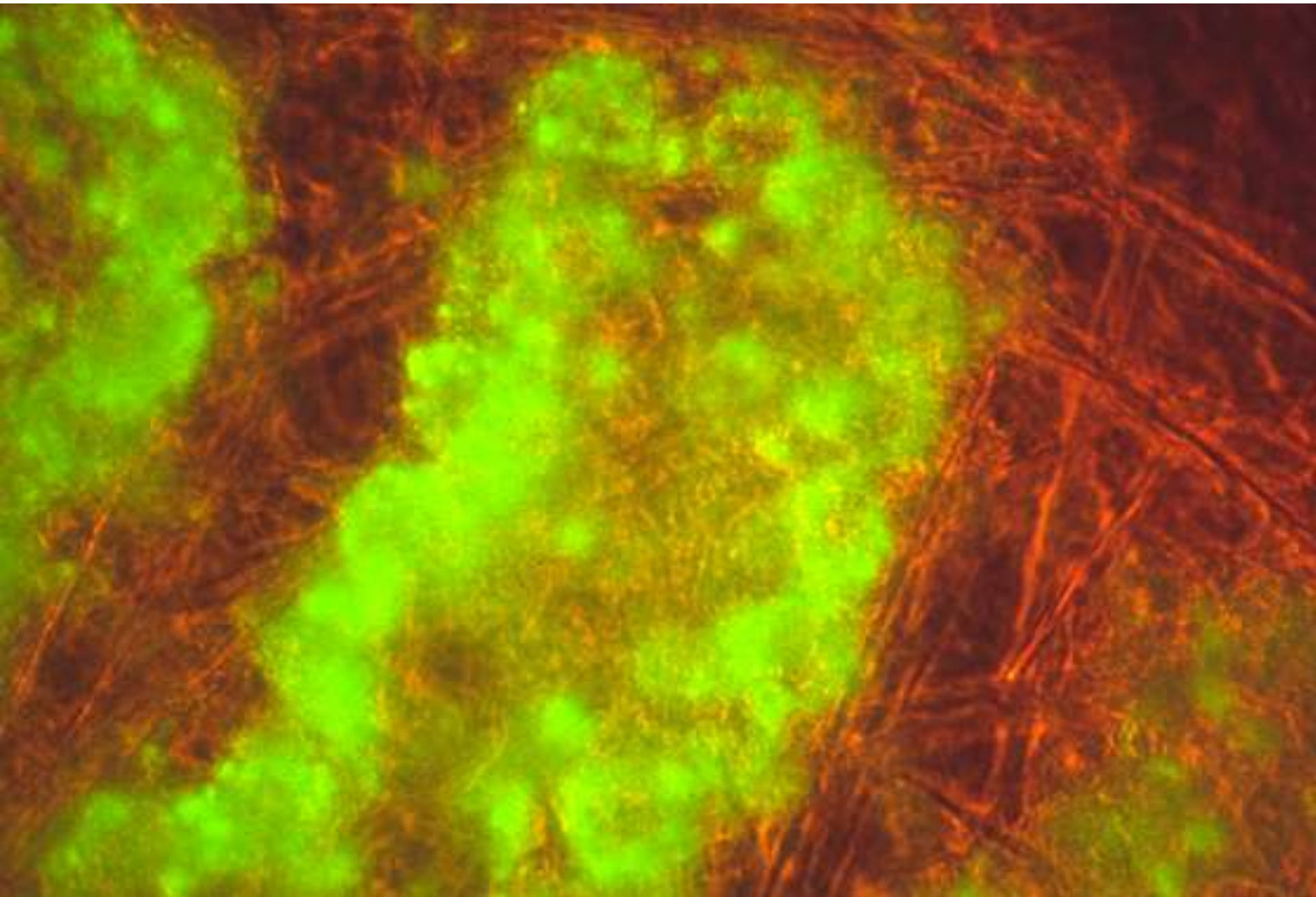


Our Interpretation of Sponge Hydraulics

P is for PINACOCYTE
 M is for MESOHYL CELL
 C is for CHOANOCYTE



- A) Water flows through the mesohyl, directly among the mesenchymal cells.
- B) Separate incurrent canals do not exist, comparable to the excurrent canals. (except that there can be invaginations in the outer surface of the sponge, with incurrent pores located at the inner most parts of these invaginations)
- C) Flagella drive water through the sheets of choanocytes (as in nephridia), sucking water between adjacent cells from the non-flagellated to the flagellated side.
- D) The pressure within the mesohyl space is lower than that outside the sponge.



HOW DO SPONGES PUMP WATER?

